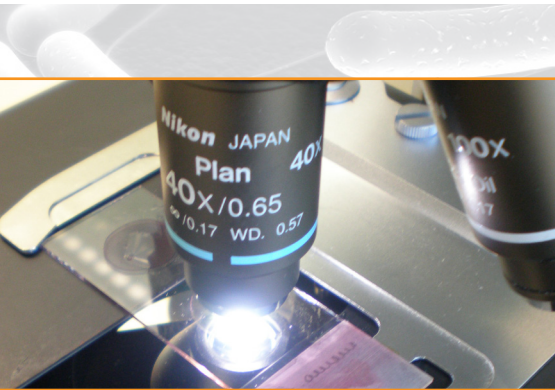




FlorInScan

Comprehensive Analysis of Gut Ecology System



Facts

The intestinal flora contributes to the development of the mucosa and intestinal immunity. It is involved in the production of group B and K vitamins, plays a role in the modulation of the intestinal mucosa metabolism and in its motility, and represents a barrier against pathogen colonisation.

Who and when should be tested?

Patients with:

- Acute and chronic diarrhea
- Malabsorption, maldigestion
- Hypersensitivity/allergies
- Abdominal pain from unknown origin
- Diseases with immunological disorders

Why FlorInScan / FlorInScan plus?

FlorInScan:

Extended quantitative bacteriological analysis of fecal aerobic and anaerobic

flora allowing:

- Precise identification of bacteria, fungi, and pH determination
- Analysis of digestive parameters (digestion residues and pancreatic-1- elastase).
- Detection of fecal hemoglobin

FlorInScan plus :

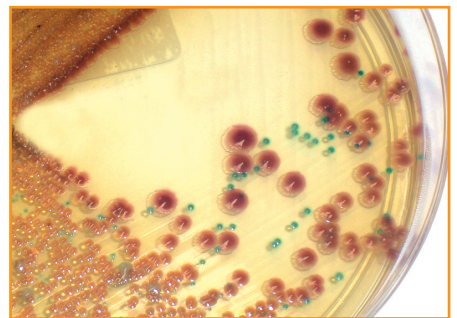
Like FlorInScan, plus inflammatory and immunological markers of intestinal permeability

Results and Interpretation

- Clear and detailed report
- Fast results

Additional Information

- For both tests, stool sample is required - Sample kit on request available at Laboratoires Réunis
- Sample stability: 24h



LR100QK044A_PM_SF_FL_019_181213_EN_DP_V04